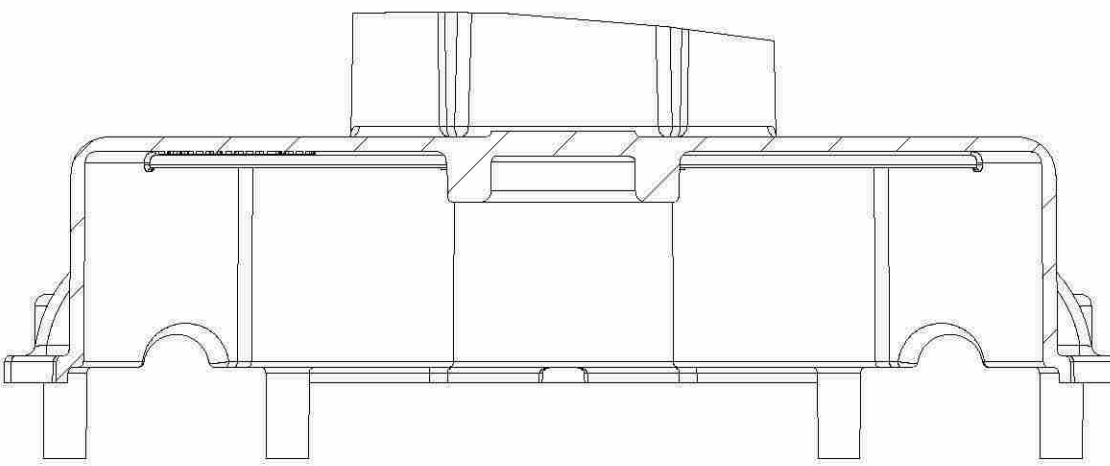
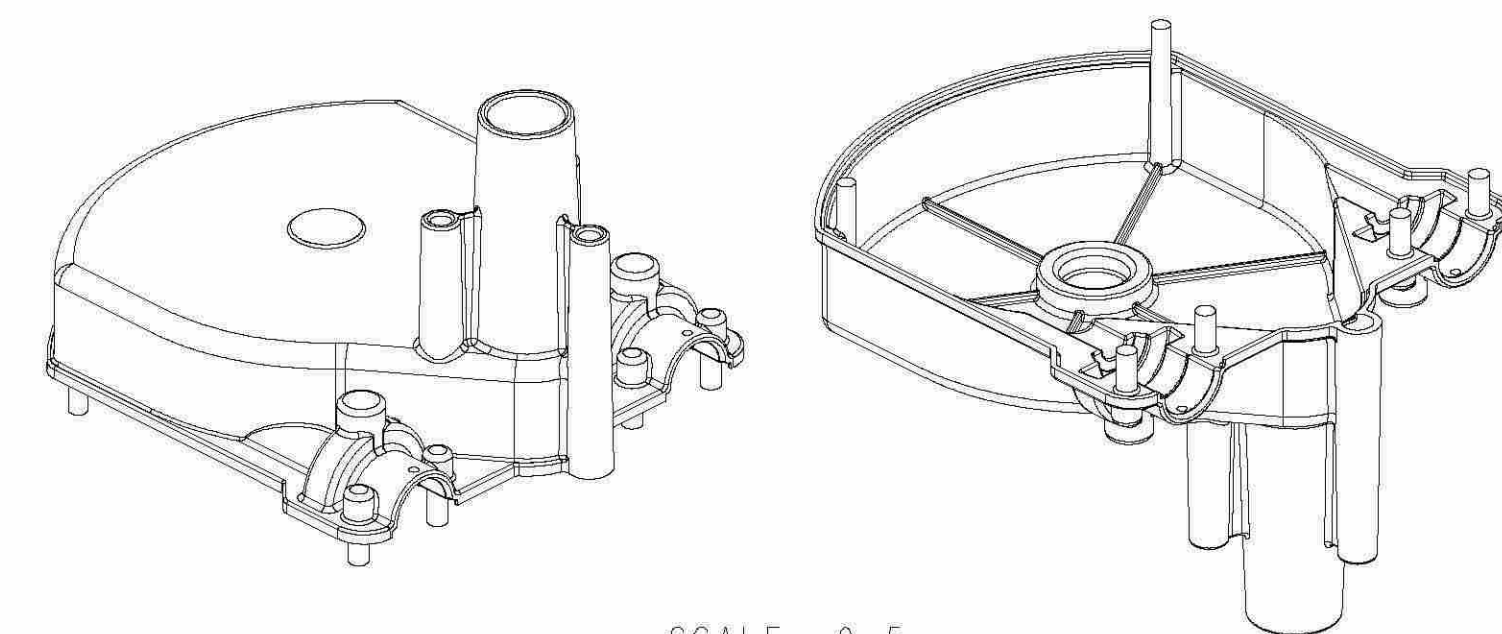


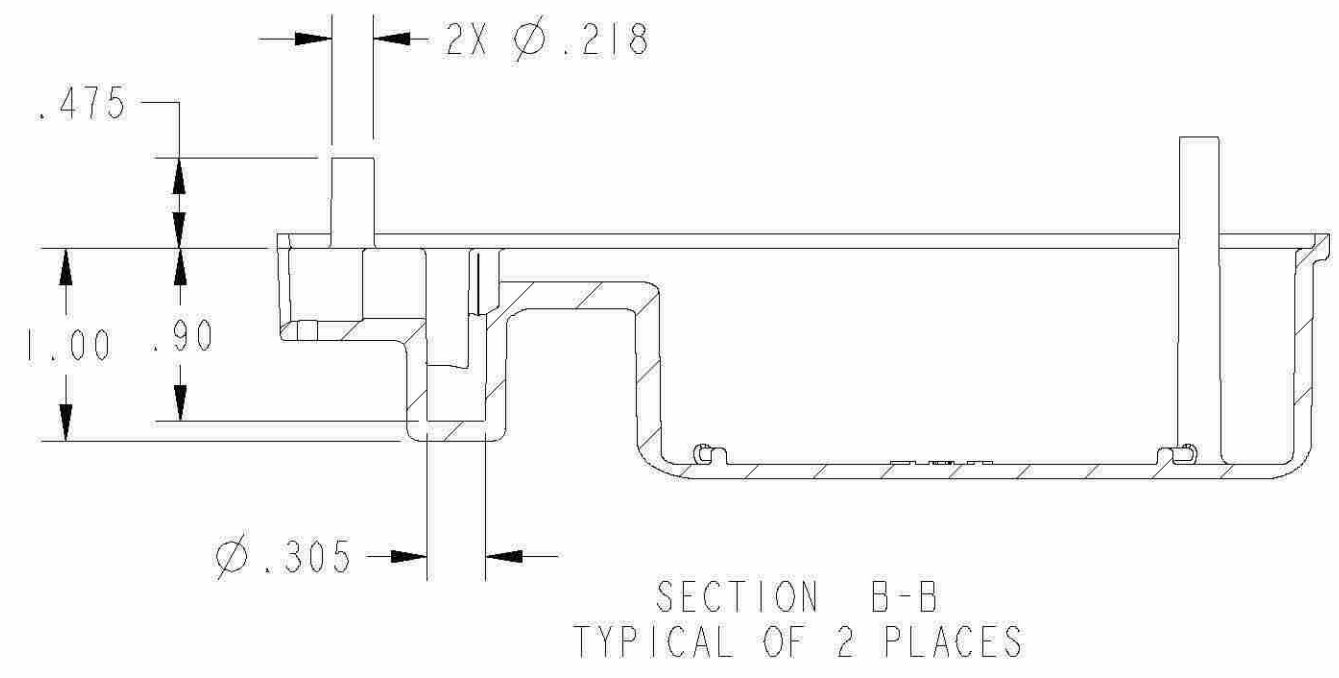
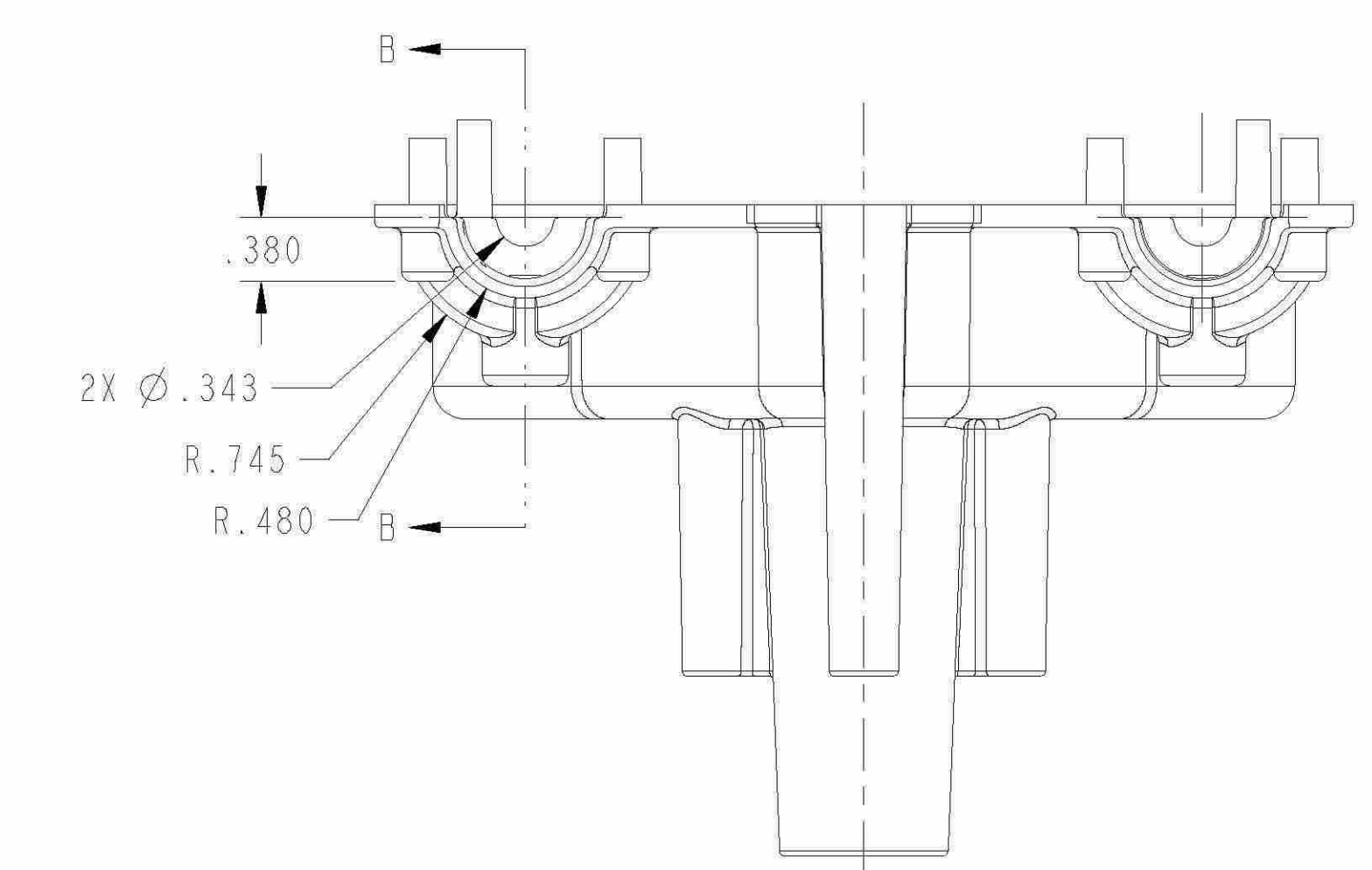
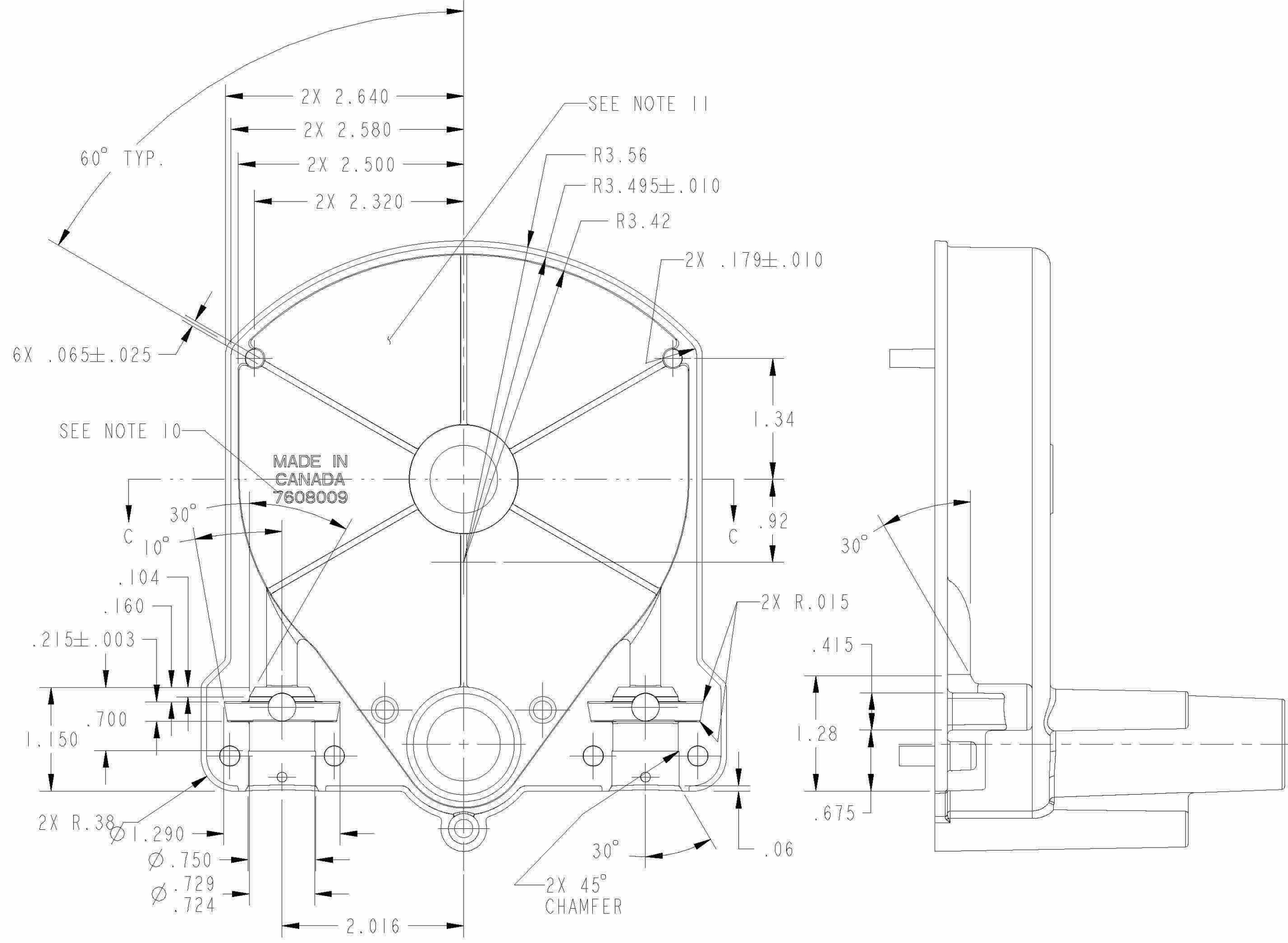
REVISIONS				
REV	DESCRIPTION	DATE	DRW/CHK	APP
A	PRELIMINARY RELEASE, REPLACES 3915413	15MAY12	-	-
B	ADDED SIG. SYMBOLS TO $\phi .811$, $\phi .750$ & DIM 2.941	04JUN12	-	-



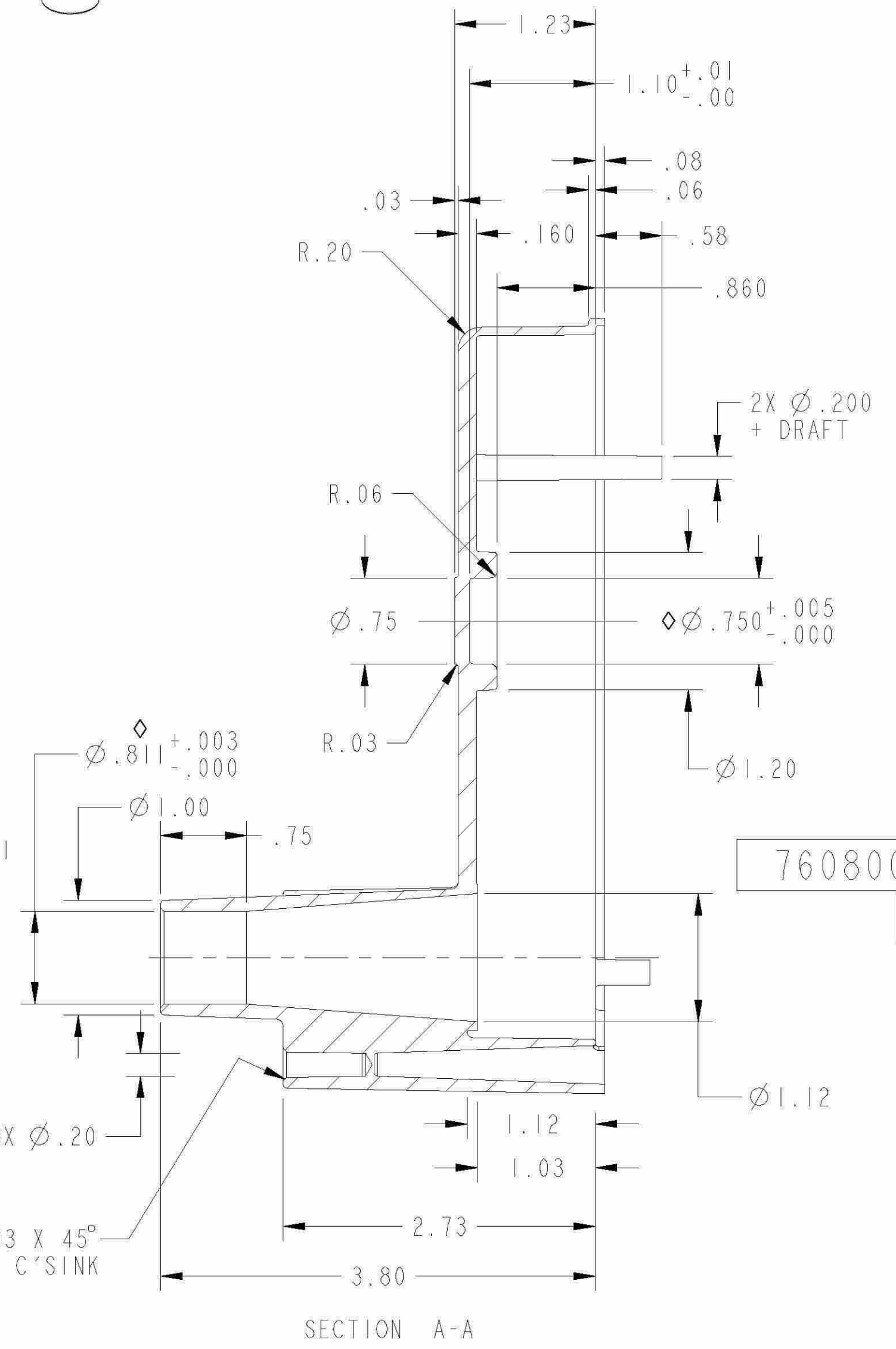
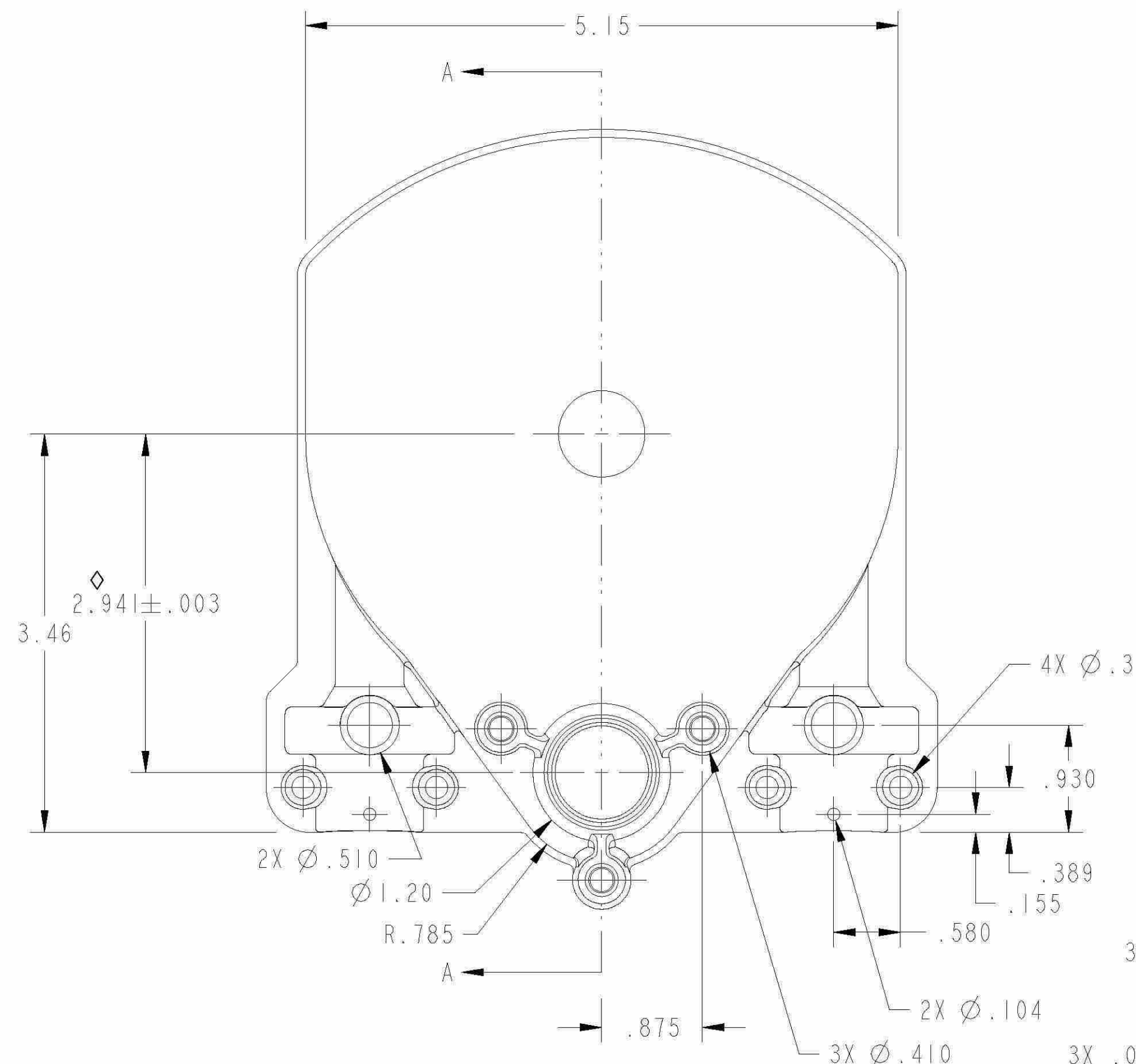
SECTION C-C



SCALE 0.5



SECTION B-B
TYPICAL OF 2 PLACES



SECTION A-A

7608009

- NOTES:
1. MATERIAL: ASTM B86 AC41A (ZAMAK 5)
 2. PART AND TOOL TO BE MANUFACTURED PER ELECTRONIC MODEL 7608009.PRT.
 3. PARTING LINE MISMATCH .004 MAX, NADCA FINE GRADE.
 4. SURFACE FINISH TO BE NADCA CLASS 3, COMMERCIAL GRADE.
 5. RADII TO BE .06 UNLESS OTHERWISE SPECIFIED.
 6. THIS PART MUST ALIGN WITH AND FIT ASSOCIATED PART 7608010.
 7. GATE AND RISER LOCATIONS TO BE APPROVED BY _____
 8. EJECTOR PIN PADS TO BE FLUSH TO .015 DEPRESSED. EJECTOR PIN LOCATIONS TO BE APPROVED BY _____
 9. WALL THICKNESS TO BE .075 THRU-OUT EXCEPT AS NOTED.
 10. PART NUMBER TO APPEAR IN APPROXIMATE LOCATION. CHARACTERS TO BE .10 ±.01 TALL, RAISED .015 ±.005. REMOVABLE INSERT.
 11. DATE CODE TO APPEAR IN APPROXIMATE LOCATION. FORMAT FOR DATE CODE TO BE APPROVED BY _____
 12. PARTS TO BE CLEAN WITH NO BURRS, CONTAMINANTS OR CORROSION. FLASH TO BE TRIMMED PER NADCA COMMERCIAL TRIMMING.
 13. SUPPLIER MUST PROVIDE CERTIFIED MATERIAL TEST REPORT INCLUDING CHEMICAL ANALYSIS WITH EACH SHIPMENT.
 14. PART VOLUME: 6.341 IN³

SYMBOLS: ∇ \diamond \square REF. SPEC DS026	DESCRIPTION	UPPER HOUSING	DRAWING SIZE: D
	PROJECT	SAFE-T QC	SCALE: 1.0 : 1.0
UNLESS OTHERWISE SPECIFIED -DIMENSIONS ARE IN INCHES -TOLERANCES ARE: TWO DECIMALS: ±.010 THREE DECIMALS: ±.005 ANGLES: ±1°			SHEET 1 OF 1
			DRAWN: _____ CHECKED: _____ APPROVED: _____
			DRAWING NUMBER 7608009