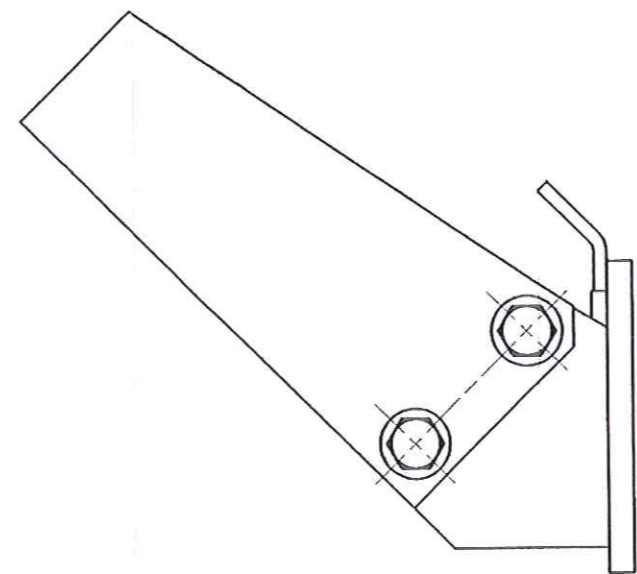
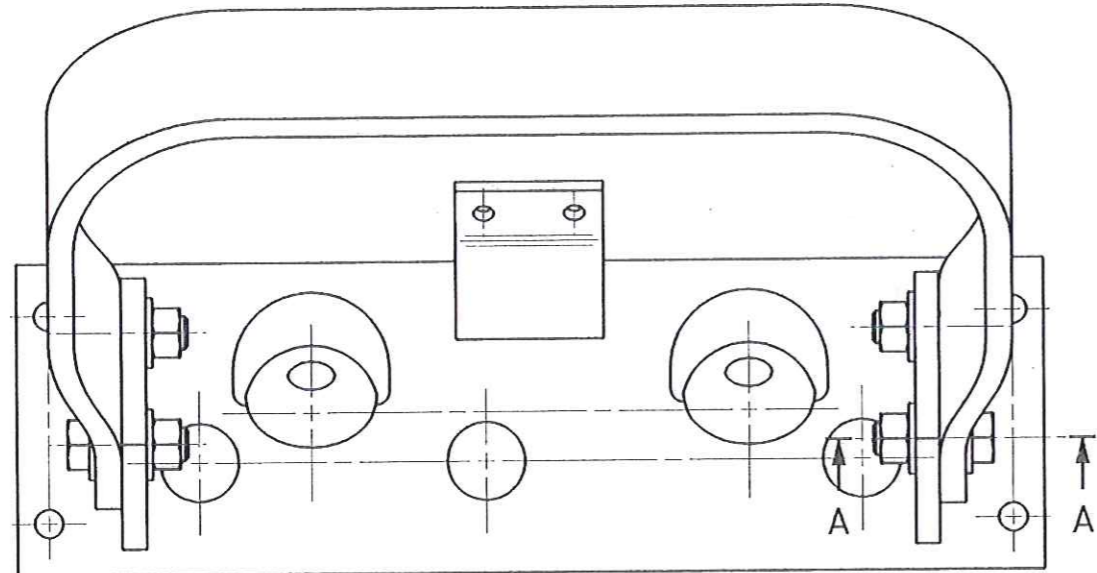
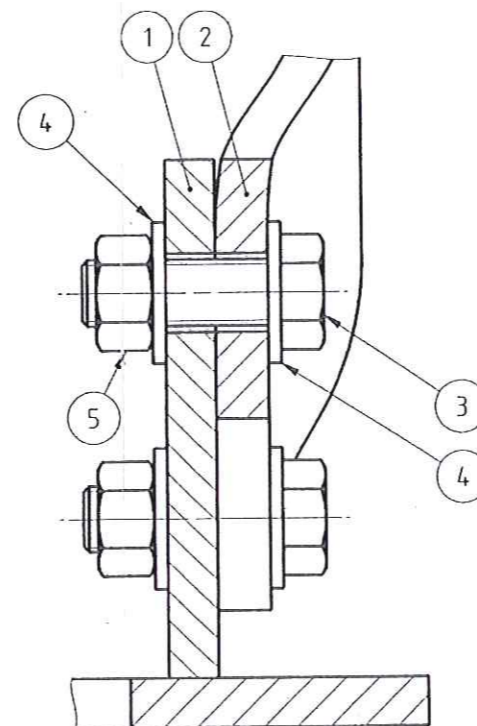


REVISION					
ZONE	REV.	DCR / ECO NO.	DESCRIPTION	DATE	DRFT APVD

19 SEP 2013  
FOR PRODUCTION



SECTION A-A  
(1:1)



ITEM	QTY	PART DESCRIPTION	DRAWING/ PART NO.	MATERIAL	REFERENCE
5	4	HEX SELF-LOCKING NUT 1/2"	MS 51922-33	-	-
4	8	PLAIN WAHSER 1/2"	MS 27183-18	-	-
3	4	HEX HD CAP SCREW 1/2" X 1 1/2"	MS 90725-113	-	-
2	1	LAMP GUARD (RHS)	37518 9909020	-	-
1	1	HEADLIGHT BASE, RIGHT	37580 8013010	-	-

IF IN DOUBT, PLEASE ASK					
UNLESS OTHERWISE SPECIFIED			DO NOT SCALE DRAWING		
All dimensions are in mm	Surface texture	-	Stage	PRELIM	Date
General tolerance	Material	-	Designed		11/6/96
Angular tolerance		-	Checked		11/6/96
			Approved		11/6/96
			Drawn	SHELLY	19-03-96
			Sheet	1 OF 1	
			Scale	1:2	
			Drawing Name	M.375.80.80.13.00.0.00	
			Part No.	37580 8013000	Rev.
					-

NOTES

1. APPLICABLE STANDARDS / SPECIFICATIONS :  
SINGAPORE TECHNOLOGIES AUTOMOTIVE LTD DRAFTING STANDARDS /  
ISO STANDARDS / AWS WELDING STANDARDS

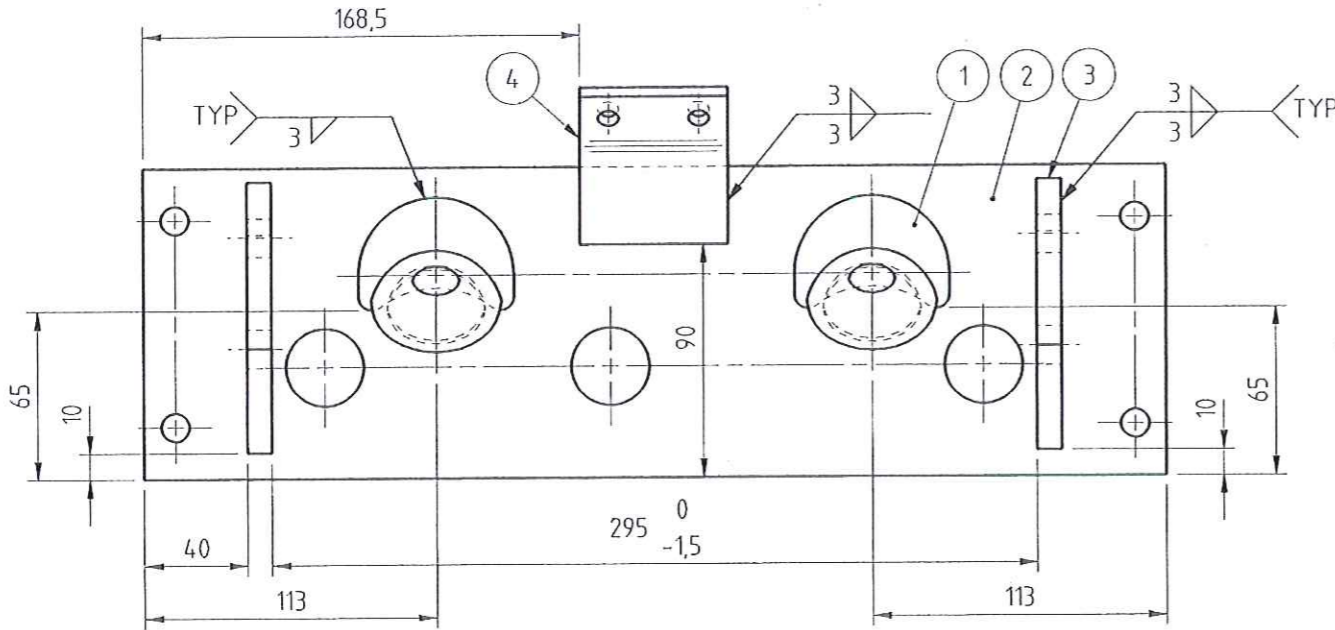
HEADLIGHT BASE  
WITH GUARD, RIGHT ASSY  
**GMT**

19 SEP 2013  
23-05-96

THIS DOCUMENT IS THE PROPERTY OF SINGAPORE TECHNOLOGIES AUTOMOTIVE LTD AND IS PROTECTED UNDER THE "SINGAPORE PATENTS ACT" AND NO PART OF IT IS TO BE DISCLOSED TO ANY THIRD PARTY WITHOUT THE WRITTEN APPROVAL OF SINGAPORE TECHNOLOGIES AUTOMOTIVE LTD.

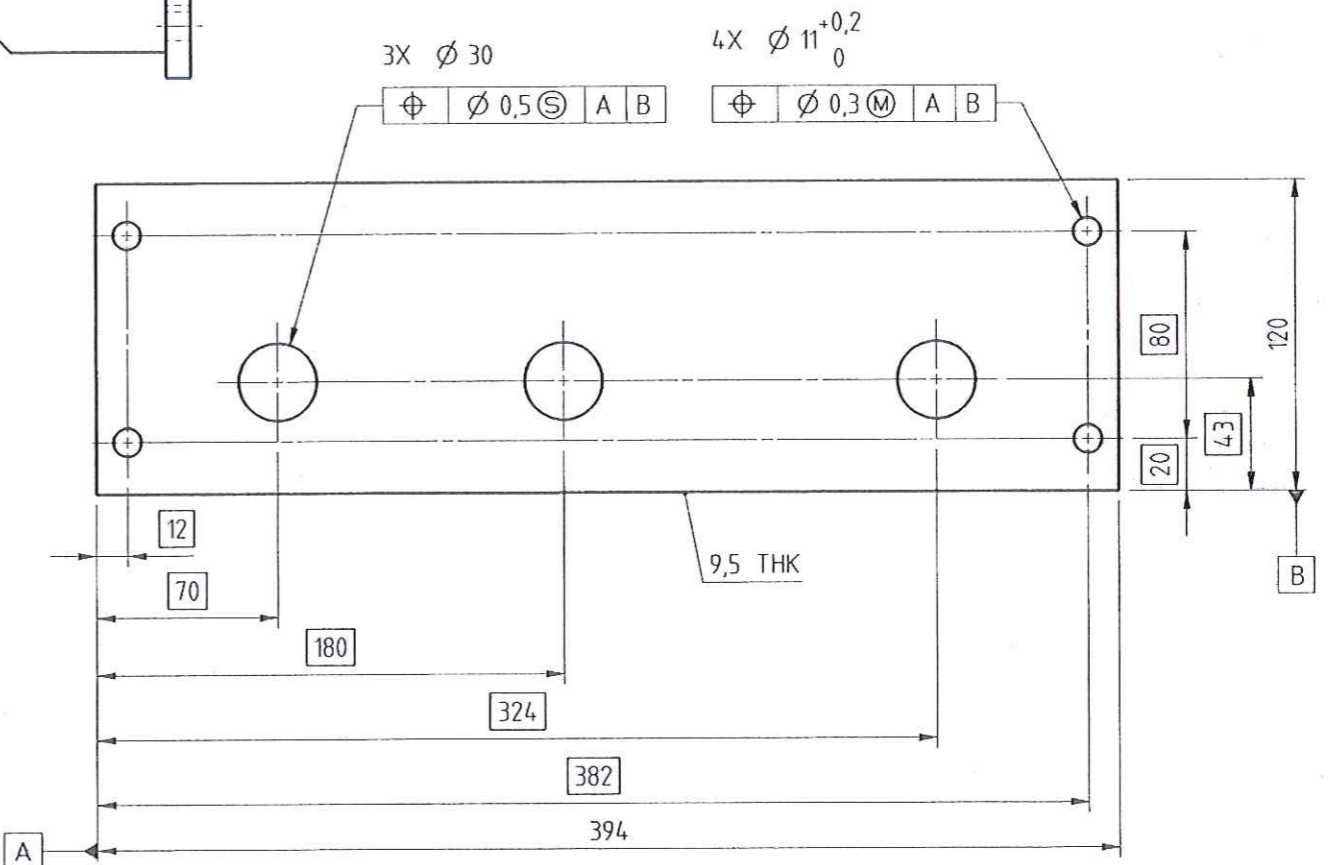
REVISION						
ZONE	REV.	DCR / ECO NO.	DESCRIPTION	DATE	DRFT	APVD

ASSEMBLY

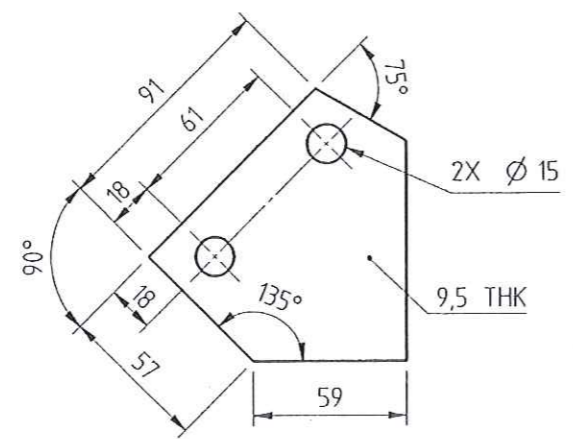


19 SEP 2013  
FOR PRODUCTION

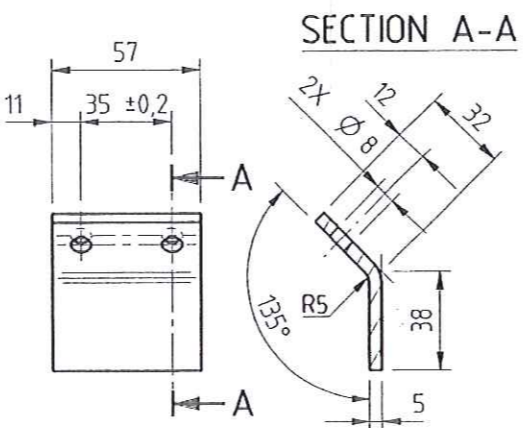
2 PLATE A



3 PLATE B



4 HORN BRACKET



NOTES

1. APPLICABLE STANDARDS / SPECIFICATIONS : SINGAPORE TECHNOLOGIES AUTOMOTIVE LTD DRAFTING STANDARDS / ISO STANDARDS / AWS WELDING STANDARDS
2. DEBURR ALL SHARP EDGES
3. PAINTING INSTRUCTION AS PER PI/021/001

ITEM	QTY	PART DESCRIPTION	DR./WING/ PART NO.	MATERIAL	REFERENCE
4	1	HORN BRACKET	-	AA 6061-T6	-
3	2	PLATE B	-	AA 6061-T6	-
2	1	PLATE A	-	AA 6061-T6	-
1	2	ELECTRICAL LAMP MOUNTING	37518 9909030	-	-

IF IN DOUBT, PLEASE ASK

UNLESS OTHERWISE SPECIFIED		DO NOT SCALE DRAWING			
All dimensions are in mm	Surface texture	Stage	PRELIM	Date	PRD Date
General tolerance	±1.00	Designed			<i>[Signature]</i> 14/01/96
Angular tolerance	±1.00°	Checked			<i>[Signature]</i> 18/11/96
		Approved			<i>[Signature]</i> 27/1/97

**HEADLIGHT BASE, RIGHT**

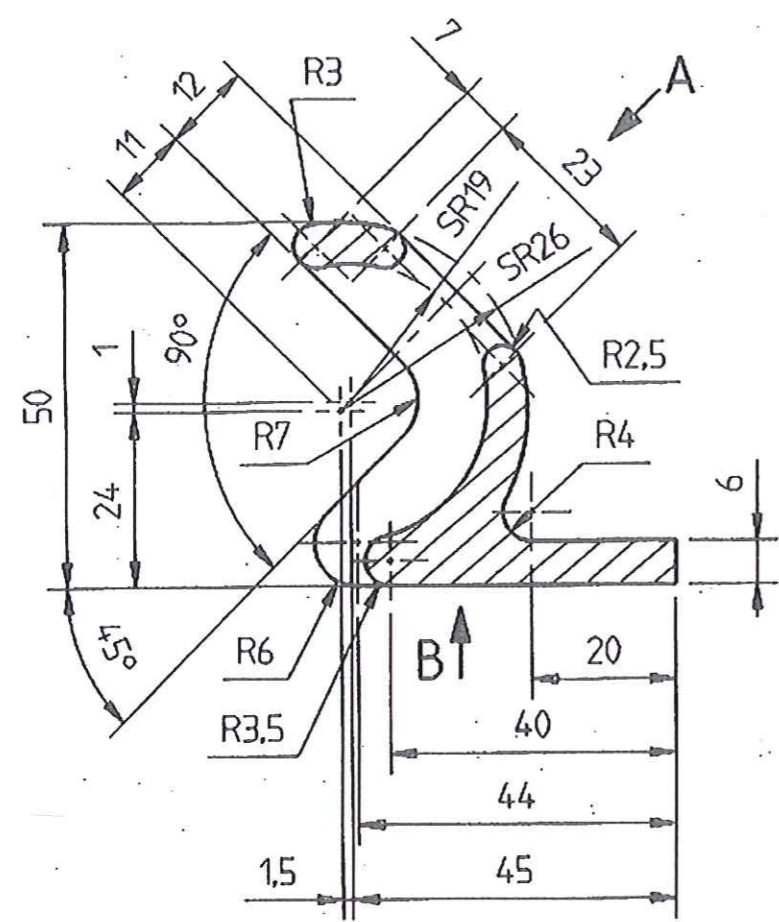
# GMT

Drawing Name	M.375.80.00.13.01.0.00	Rev.	-
Part No.	37580 8013010	Rev.	-

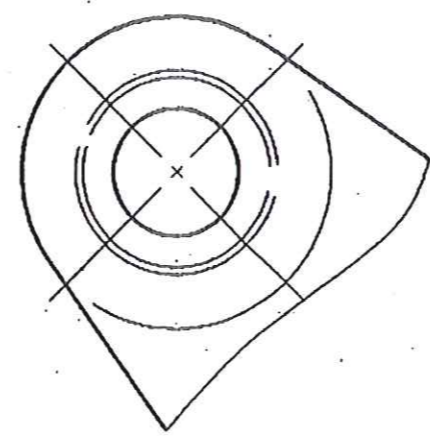
THIS DOCUMENT IS THE PROPERTY OF SINGAPORE TECHNOLOGIES AUTOMOTIVE LTD AND IS PROTECTED UNDER THE SINGAPORE PATENTS ACT. NO PART OF IT IS TO BE DISCLOSED TO ANY THIRD PARTY WITHOUT THE WRITTEN APPROVAL OF SINGAPORE TECHNOLOGIES AUTOMOTIVE LTD.

REVISION					
ZONE	REV.	DCR / ECO NO.	DESCRIPTION	DATE	DRFT APVD

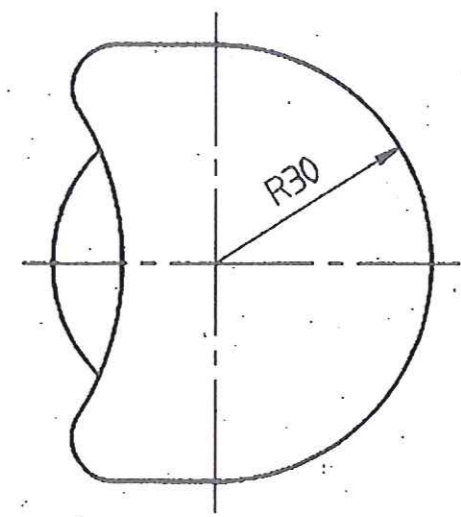
19 SEP 2013  
FOR PRODUCTION



VIEW A



VIEW B



**NOTES**

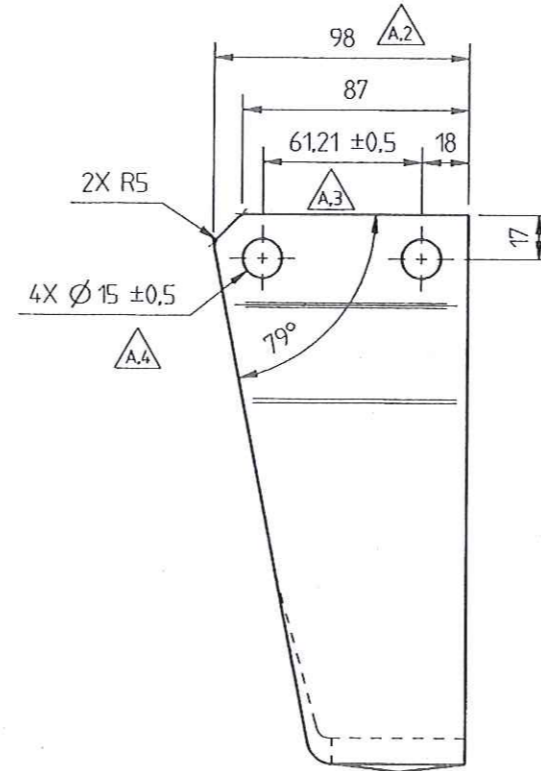
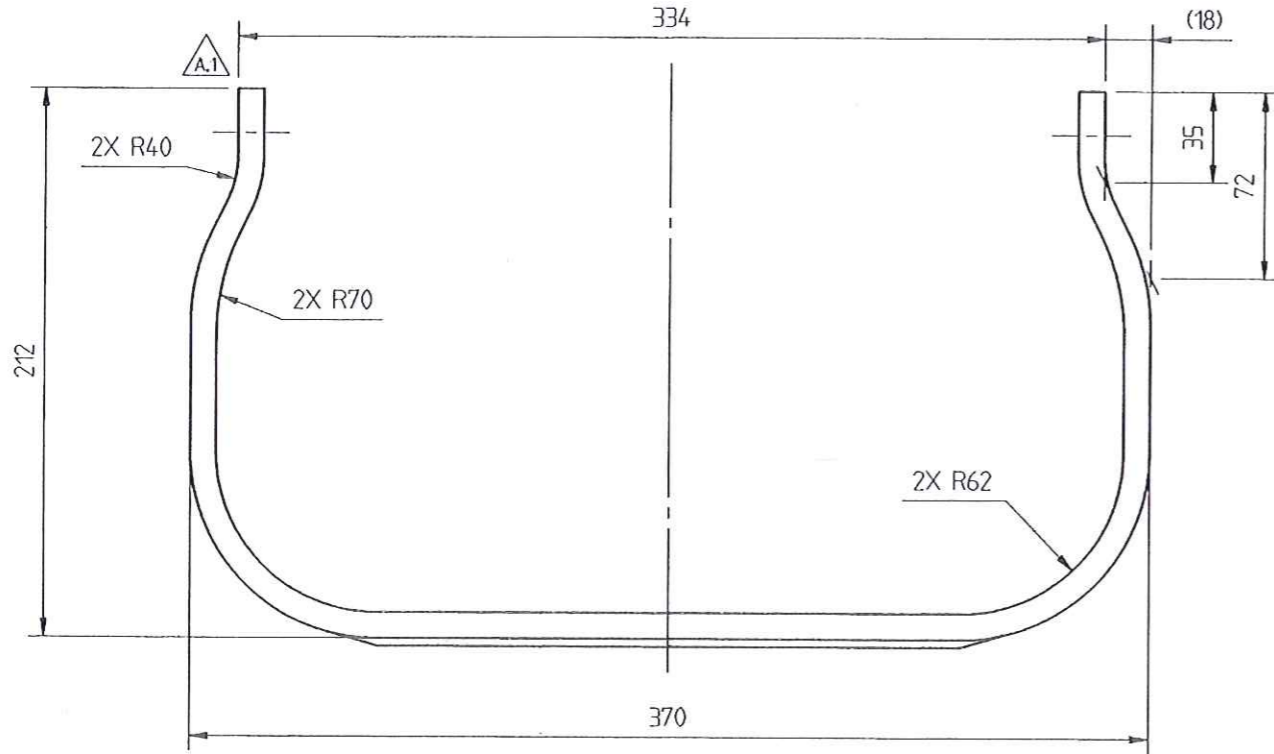
1. APPLICABLE STANDARDS / SPECIFICATIONS :  
SINGAPORE AUTOMOTIVE ENGINEERING DRAFTING STANDARDS /  
ISO STANDARDS / AWS WELDING STANDARDS
2. DEBURR ALL SHARP EDGES
3. MATL : ALUMINIUM ALLOY 5083, TEMPER H113 SPEC MIL-A-17358 3/8" THICK  
OR ALUMINIUM ALLOY 5083, TEMPER H112 SPEC MIL-A-19005 3/8" THICK OR  
ALUMINIUM ALLOY 5086, TEMPER H32 OR H112 SPEC MIL-A-19070 3/8" THICK

ITEM	QTY	PART DESCRIPTION	DRAWING/ PART NO.	MATERIAL	REFERENCE
W1		W2 1, 12, 15, 16	W3 17	W4	W5 14, 18
UNLESS OTHERWISE SPECIFIED :				DO NOT SCALE DRAWING	
All dimensions are in mm		Surface texture		Stage	Checked
General tolerance ± 0.5		Material		Date	Approved
Angular tolerance ± 1°		NOTE 3		Date	Date
<p><b>ELECTRICAL LAMP MOUNTING</b></p> <p style="font-size: 2em;"><b>GMT</b></p>				Weight : -	
				Scale : 1 : 1	
				Part No. : 37518 9909030	
				Next Assy	
Sheet : 1 OF 1					
Drg No. M.375.18.99.09.03		Rev. 0			
				Ext. 00	

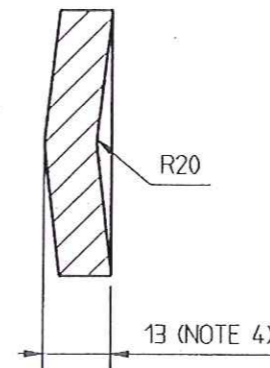
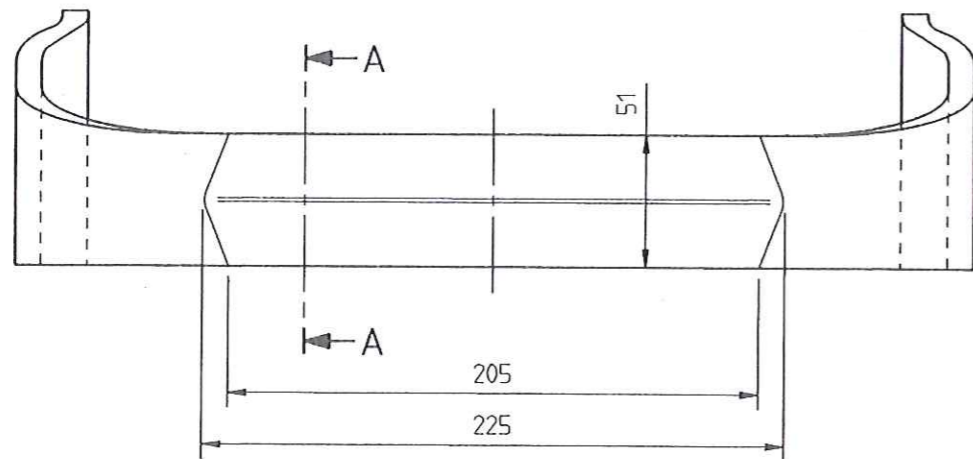
THIS DOCUMENT IS THE PROPERTY OF SINGAPORE AUTOMOTIVE ENGINEERING LTD AND IS PROTECTED UNDER THE STATUTORY BODIES AND GOVERNMENT COMPANIES (PROTECTION OF SECRECY) ACT 1983/OFFICIAL SECRETS ACT. NO PART OF IT IS TO BE DISCLOSED TO ANY THIRD PARTY, REPRODUCED IN PART OR IN WHOLE OR USED IN ANY MANNER, WITHOUT THE WRITTEN APPROVAL OF SINGAPORE AUTOMOTIVE ENGINEERING LTD.

REVISION					
ZONE	REV.	DCR / ECO NO.	DESCRIPTION	DATE	DRFT APVD
A1	A	94/0024	1. DIMENSION 10 REMOVED	190494	PL
A6			2. DIMENSION WAS 97,979		
A5			3. DIMENSION WAS 61		
B5			4. TOLERANCE ±0.5 ADDED		
F1			5. NOTE 5 ADDED		

19 SEP 2013  
FOR PRODUCTION



SECTION A - A  
(1:1)



NOTES

1. APPLICABLE STANDARDS / SPECIFICATIONS :  
SINGAPORE AUTOMOTIVE ENGINEERING DRAFTING STANDARDS /  
ISO STANDARDS / AWS WELDING STANDARDS
2. DEBURR ALL SHARP EDGES
3. MATL : ALUMINIUM ALLOY 5083, TEMPER H113 SPEC MIL-A-17358 3/8" THICK  
OR ALUMINIUM ALLOY 5083, TEMPER H112 SPEC MIL-A-19005 3/8" THICK OR  
ALUMINIUM ALLOY 5086, TEMPER H32 OR H112 SPEC MIL-A-19070 3/8" THICK
4. PROFILE FORMED BY PRESS WORK
5. PAINTING INSTRUCTION AS PER PI/021/001

over 3	over 6	over 30	over 120	over 400	over 1000	over 2000	over 4000	over 8000	over 12000	over 16000
±0.5	±1	±1.5	±2	±3	±4	±6	±8	±10	±12	±12

ITEM	QTY	PART DESCRIPTION	DRAWING/ PART NO.	MATERIAL	REFERENCE
W1		W2 1, 12, 15, 16	W3 17	W4	W5 14, 18
UNLESS OTHERWISE SPECIFIED			DO NOT SCALE DRAWING		
All dimensions are in mm		Surface texture			
General tolerance	-	Material		NOTE 3	
Angular tolerance	±0.5°				
<b>LAMP GUARD ( RHS )</b>					
<b>GMT</b>					
Weight : -		Scale : 1 : 2			
Part No. : 37518 9909020		Next Assy			
Sheet : 1 OF 1		Rev. Ext.			
Drg No. M.375.18.99.09.02		0 00			

THIS DOCUMENT IS THE PROPERTY OF SINGAPORE AUTOMOTIVE ENGINEERING LTD AND IS PROTECTED UNDER THE STATUTORY BODIES AND GOVERNMENT COMPANIES (PROTECTION OF SECRECY) ACT 1983 (OFFICIAL SECRETS ACT). NO PART OF IT IS TO BE DISCLOSED TO ANY THIRD PARTY, REPRODUCED IN ANY MANNER OR BY ANY MEANS, WITHOUT THE WRITTEN APPROVAL OF SINGAPORE AUTOMOTIVE ENGINEERING LTD.