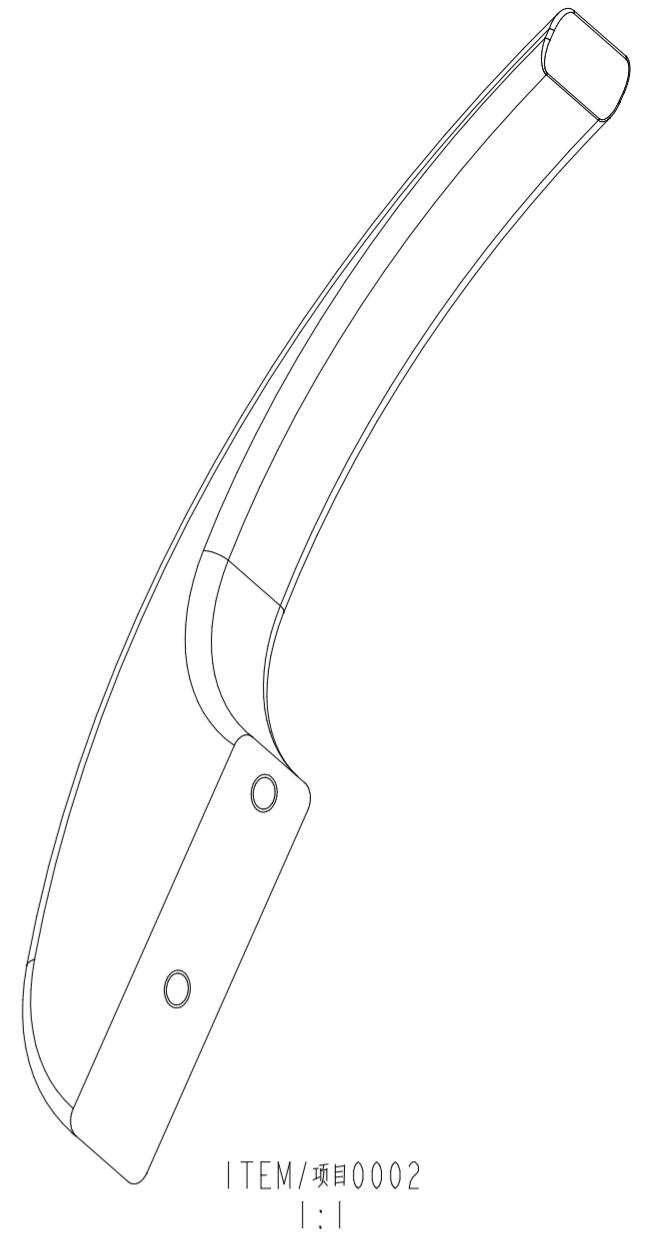
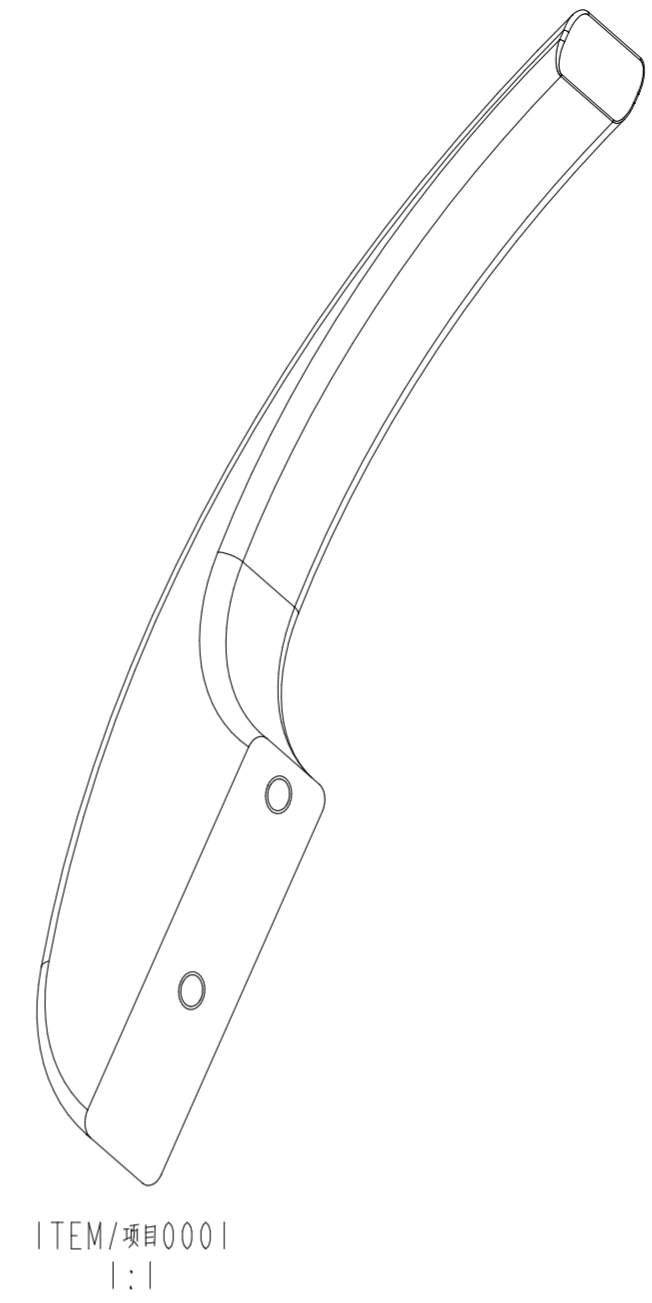
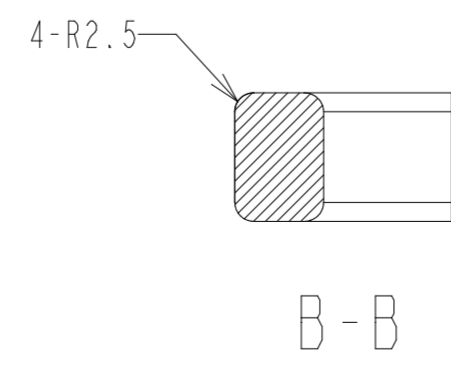
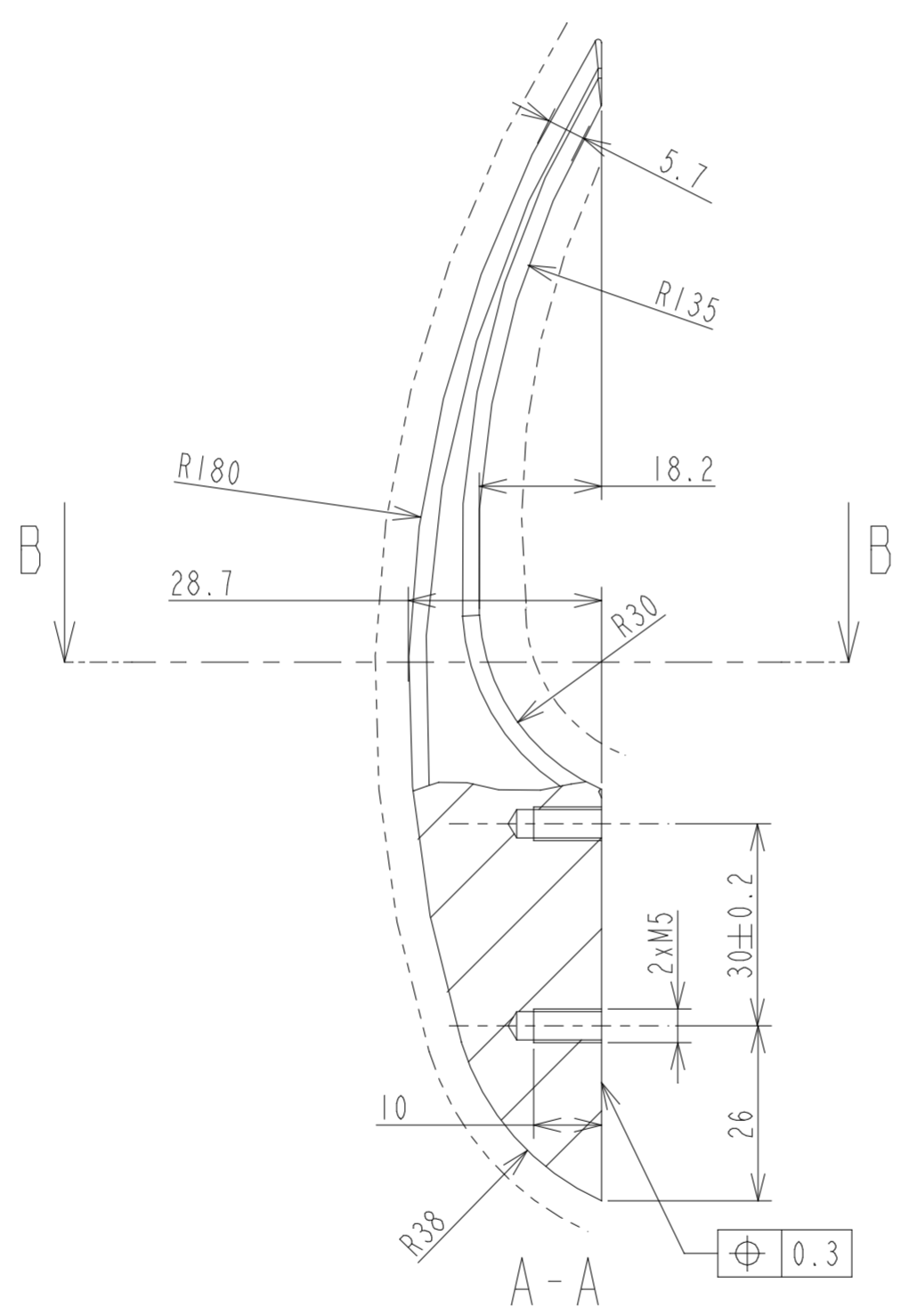
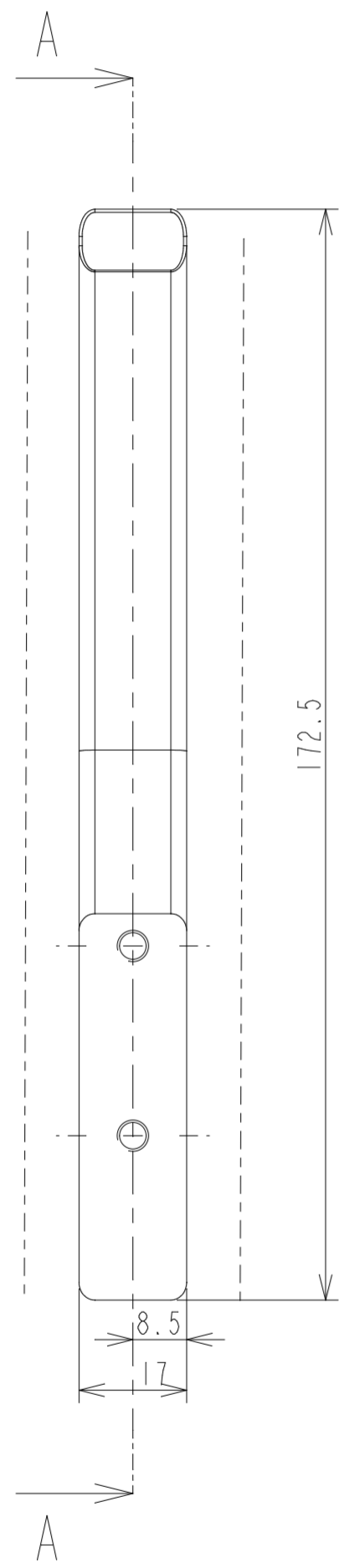


Application 应用	Z100226	C2	08-08-12	- ADD ITEM 0002
Original 原始图纸	Z100833	C1	21-10-10	- DIMENSIONS CHANGED: 30-15 TO 30-40
Drawing No 图号	Z100906-0000-ST-FMTS	B2	19-12-07	- ADD LENGTH DIMENSION OF PART (TOTAL HEIGHT)
		B1	31-10-07	- ADD LENGTH DIMENSION OF PART (TOTAL HEIGHT)
		A1	29-06-07	- CHANGE HANDLE MATERIAL FROM ALUMINUM TO FLUORIONCARBON
				- CHANGE HANDLE MATERIAL FROM ALUMINUM TO FLUORIONCARBON
Edition 版本		Area 区域	Date 日期	Modification description 修改描述



NOTE:
Made by pressure casting process
Fluorioncarbon after Dry Honing
-----visible surface
Draft angle 2 degree
Radius without dimension R0.5
PART FULLY PAINTED
-ITEM 0002 IS THE SAME AS ITEM 0001,EXCEPT PAINTING COLOR

注:
零件用压铸方法制成
外观面在氟碳喷涂前先喷砂处理
-----标记为外观面
拔模斜度 2 度
未注圆角为R0.5
零件完全喷涂
除了喷涂颜色,项目0002与项目0001完全相同

ITEM/项目 0002	FLUORIONCARBON 氟碳喷涂	3	35	RAL6018	20~40
ITEM/项目 0001	FLUORIONCARBON 氟碳喷涂	3	35	RAL6024	20~40
Item part and/or zone 零件项目 及/或区域	System 方式	Number of layers 涂层数量	Thickness (in micron) 厚度 (微米计)	Color 颜色	Brightness(%) 光泽度(%)

0002	-	-	CURVED FIXED HANDLE 曲线固定把手	AT519C3 or equivalent EN 1706 压铸铝YL112或等效铝 GB/T 15115	C 0.179			
0001	0001	-	CURVED FIXED HANDLE 曲线固定把手	AT519C3 or equivalent EN 1706 压铸铝YL112或等效铝 GB/T 15115	C 0.179			
Drawing 图号	Supplier code 供应商代码	Item 项目	Symbol 符号	Qty 数量	Description of part 零件名称	Notes 注释	Material,Standard, Drawing technical specification 材料 标准 图样技术规范	Kg unit 重量单位
C2	08-08-12	002386	LEO	Tolerance without individual indication 未注公差参考:				
C1	21-10-10	001744	ZN1	Machining 机械加工: GB/T1804-m				
B2	19-12-07	000530	SCE	Sheetmetal 钣金: GB/T1804-c				
B1	31-10-07	000487	SCE	Casting 铸造: GB/T6414-CT5				
A1	29-06-07	000414	JOY	Alu profile 铝型材: GB/T14846-Table4				
L4 版本	Date 日期	DOC 文件号	Sign 签名	Rubber 橡胶: GB/T3672.1-EN1				
	Sign 签名	Date 日期	Sign 签名	Plastic 塑料: GB/T14486-MT3				
				Glass 玻璃: GB/T19963				
Designed 设计	JOY	29-06-07	Approved 批准	Scale 比例 1:1				Page 页数 1/1
Checked 审核	DMR	29-06-07	Standard 标准化					
							Z100906	