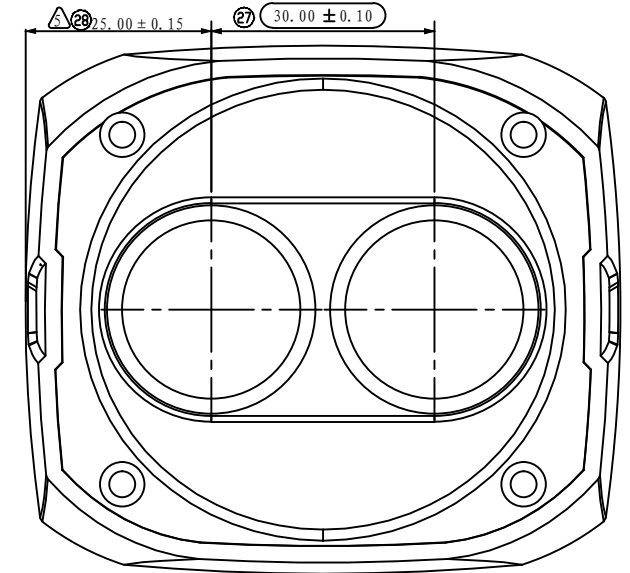
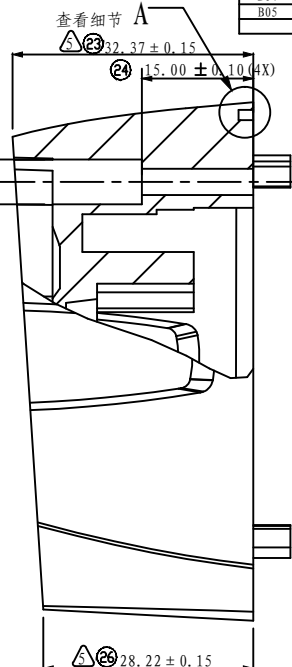
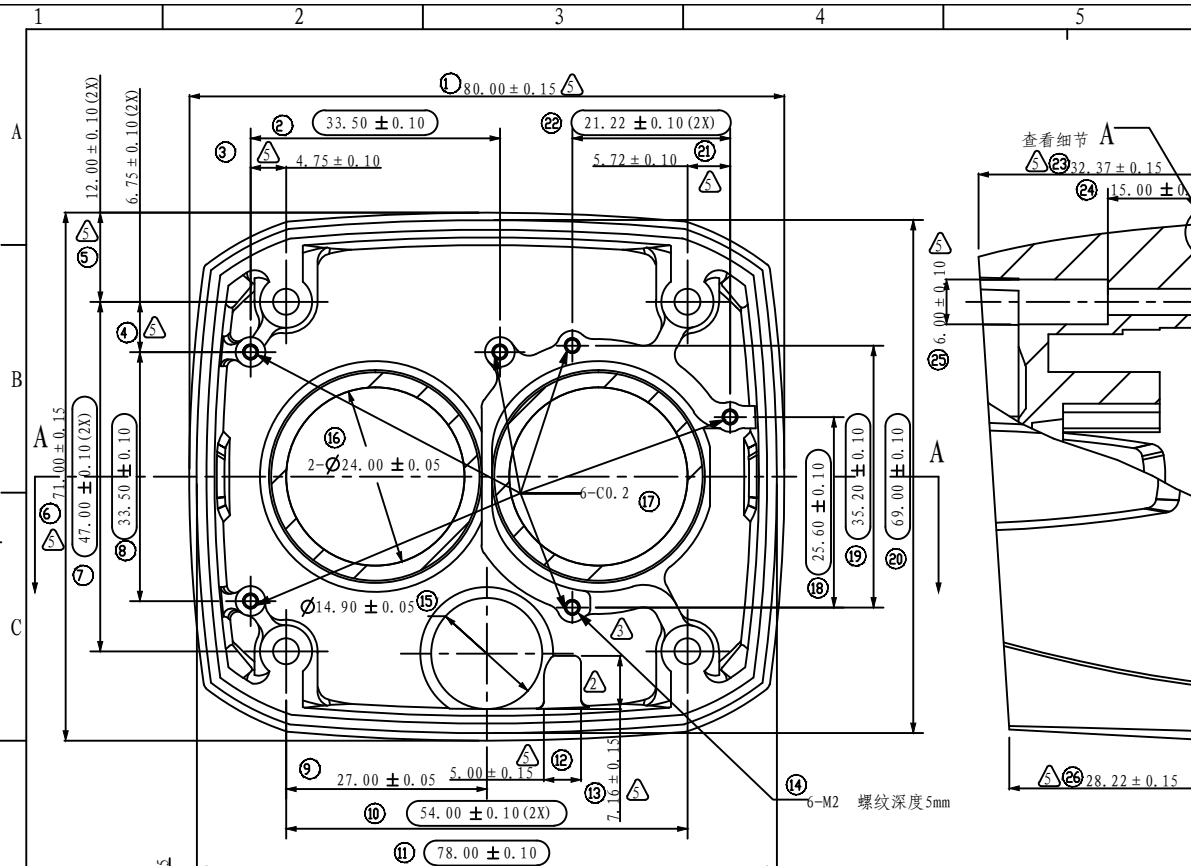
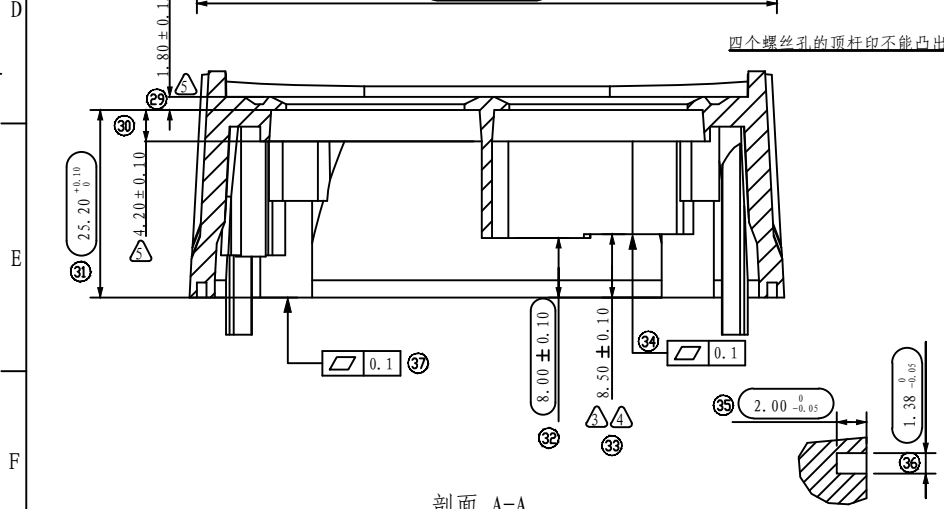


REVISIONS					
REV	ZONE	MARK	DESCRIPTION	DATE	CHANGED
B02	C3	▲	新增此处结构, 共用1PC结构	2012.03.28	罗正杰
B03	C3/F3	▲	改为灯帽结构, 该处平面结构修改	2013.03.29	吴华锋
B04	F3	▲	序号33的尺寸公差由±0.01调整到±0.10	2013.05.08	吴华锋
B05	A3/B5/D3	▲	尺寸公差调整, 详细请见图纸	2014.04.20	吴华锋

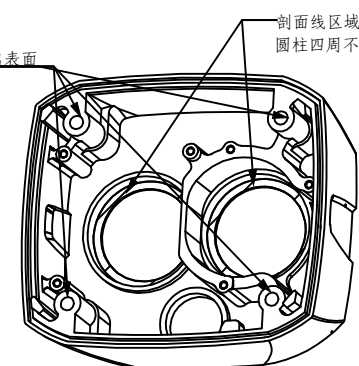


剖面 B-B



剖面 A-A

细节 A  
比例 3:1



比例 4:5

技术要求

- 1、材料: 压铸铝合金: ADC12;
- 2、带"长腰孔"为重点管控尺寸, 重点受管控尺寸Cpk ≥ 1.33;
- 3、铸件不允许有裂纹、浇不足、疏松、气孔和任何穿透性铸造缺陷;
- 4、铸件的浇道、飞边、溢流口、披缝、顶杆痕迹等应清理干净, 但允许留有痕迹;
- 5、未注线性公差参照右下角, 未注形位公差按GB/T 1184-K;
- 6、未注尺寸参照3D图纸;
- 7、拔模角度以3D为准, 未注拔模角度不大于1.5度;
- 8、表面处理见表处文件;
- 9、产品符合ROHS要求;
- 10、所有标注尺寸均为最终成品尺。

RELEASE LEVEL: [ - - - - ]  
FILE NAME: DH3-Z189-1001

.X ±0.1	±0.1	±0.1	±0.1	±0.1	TITLE: 700线经型枪机前盖	
.XX ±0.01	±0.01	ANG	±0.5	DRAW:	DATE:	UNIT: mm DWG NO.:
THESE DRAWINGS AND SPECIFICATION ARE THE PROPERTY OF ZHEJIANG DAHUA TECHNOLOGY Co., LTD. AND SHALL NOT BE REPRODUCED COPIED OR USED IN ANY MANNER WITHOUT THE PRIOR WRITTEN CONSENT OF ZHEJIANG DAHUA TECHNOLOGY Co., LTD.				CHKD:	DATE:	FINISH:
				STAD:	DATE:	MASS (kg): REV PART NO.:
				APPD:	DATE:	SCALE: 3:2 B05
				PRODUCT:	DATE:	WAT'L: SHEET: 1 OF 1